

UNCW: Soar Higher



UNIVERSITY *of* NORTH CAROLINA WILMINGTON

North Carolina's Coastal University



Established in 1947

- Founded as a public college in Wilmington, NC, to serve World War II veterans.
- Mission expanded over the years as the region grew.
- Now one of the nation's best public universities committed to high-quality academics and high research activity.



UNCW at a Glance



18,800+ Students



170 Buildings, 650 Acres



106,000 Alumni



North Carolina's
Coastal University



2,300+ Permanent
Faculty and Staff



Based in an historic city
with global connections



88% Retention Rate

Numbers presented are approximate.



Significant Economic Impact




UNIVERSITY of
NORTH CAROLINA
WILMINGTON

\$3.2 BILLION
ECONOMIC BOOST ACROSS NC

[UNCW.EDU/ECONOMIC-IMPACT](https://uncw.edu/economic-impact)

\$3.2B statewide and \$1.6B regionally

Academics



- Cameron School of Business
- College of Health and Human Services
- College of Humanities, Social Sciences, and the Arts
- College of Science and Engineering
- Watson College of Education
- Graduate School

Degrees by the Numbers



- Bachelor's: 59
- Bachelor's/Master's Combo: 16
- Master's Dual Degrees: 4
- Master's: 37
- Doctoral: 6
- 2023-24 graduates: 5,400

Research and Innovation



- \$33.6M in sponsored research last year
- \$113M over the past 6 years
- This year, UNCW has a National Science Foundation Graduate Research Fellowship winner and 4 NOAA Hollings Undergraduate Scholarship recipients



Blue Economy Index

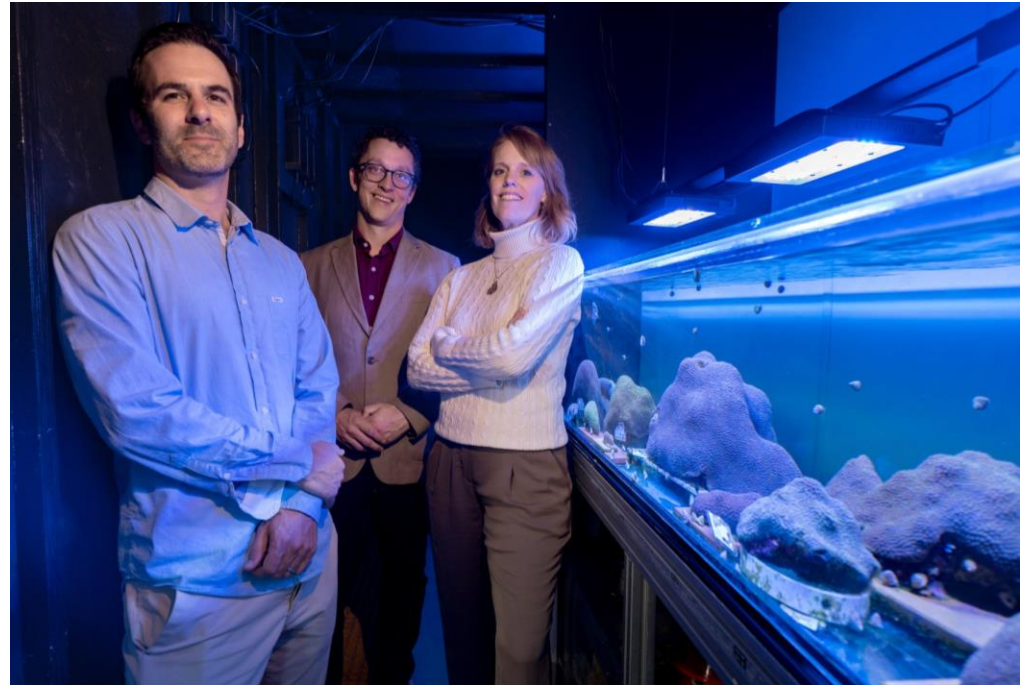
UNCW launched the Blue Economy Index in spring 2024, a unique equity benchmark to track the performance of companies involved in supporting sustainable use of ocean resources for economic growth.

Internal Partners

- Center for Innovation and Entrepreneurship
- The Alliance for the Thermos Blue Economy (All Blue)
- Cameron School of Business
- Office of Innovation and Commercialization

External Partners

- FactSet
- INDXX 36



Our “Why” at UNCW

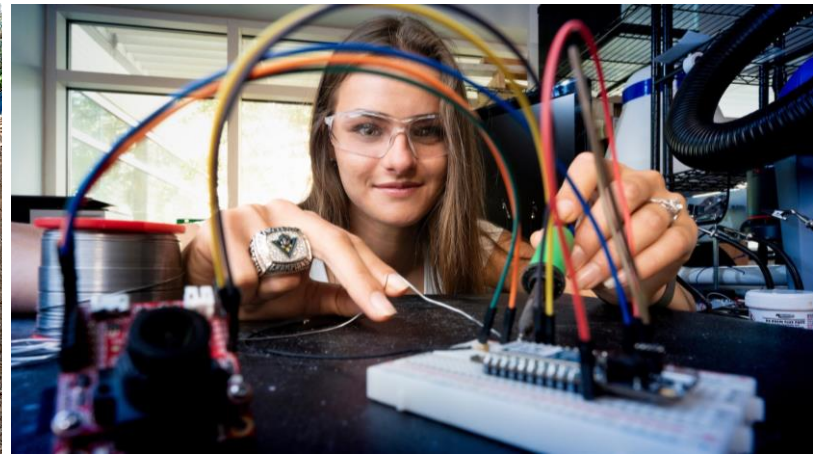


10-Year Strategic Plan

- **U**nparalleled Opportunities
- **N**ationally Prominent Programs
- **C**ommunity Commitment
- **W**orld-Class Operations and Infrastructure



Hands-on Learning Opportunities



Successful Athletics Programs

- 10 CAA Championships in the past 2 seasons
- 6 athletics teams ranked among the nation's best in the annual Academic Progress Rate released earlier this summer



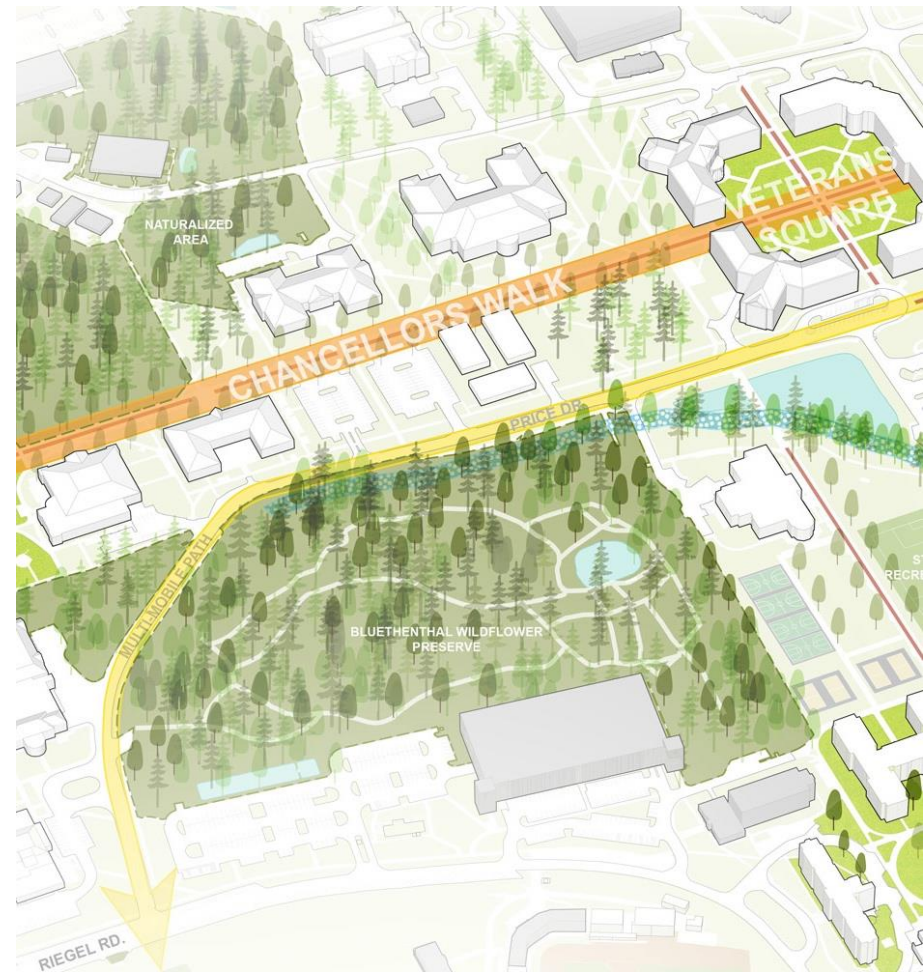
New and Renovated Facilities

- **UNCW Library** - Addition of 80,000 square feet in new Discovery Hall
- Renovation of Randall Hall
- 21st century features include:
 - Data visualization lab
 - Multimedia studio
 - Digital makerspace
 - More exhibit, event and programming space
 - “The Link” connecting the two buildings



10-Year Master Plan

- Welcome Center
- Expansion of Academic Buildings
- Renovation of Arts and Cultural Buildings
- New possibilities for Athletic Facilities
- Expansion of Outdoor Classroom Spaces



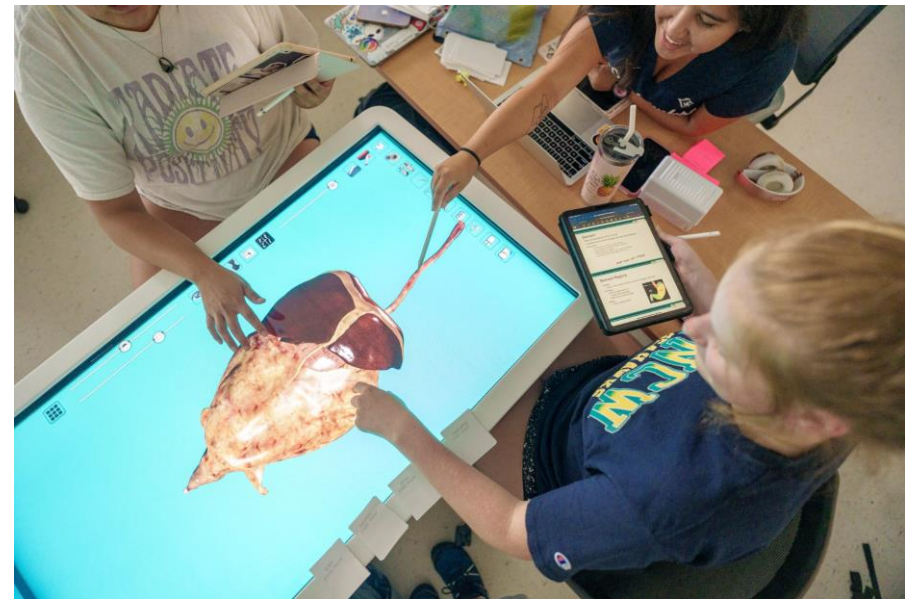
Economic Contributions of Construction

- Planned capital investments exceed \$250 million over the next 5 years
- Anticipated investments could exceed a half-billion dollars, depending on the direction UNCW takes with its Athletics facilities, including Trask Coliseum



Technological Enhancements

- UNCW's vision for the future includes continued investment in artificial intelligence
- Faculty researchers with the Institute for Interdisciplinary Identity Sciences (computer science, machine learning and data science) have been active in this field for 20 years
- Newer efforts include UNCW's Applied AI Research Lab and degree programs in cybersecurity and intelligent systems engineering



AI – Rapid acceleration



- Students, faculty and staff using AI daily for a variety reasons – enhance research, analyze data, identify trends, improve operations, enhance creative work, and so on...
- Microsoft Copilot with Commercial Data Protection available to all students, faculty and staff
- Many applications for this technology... and many ways it could be misused

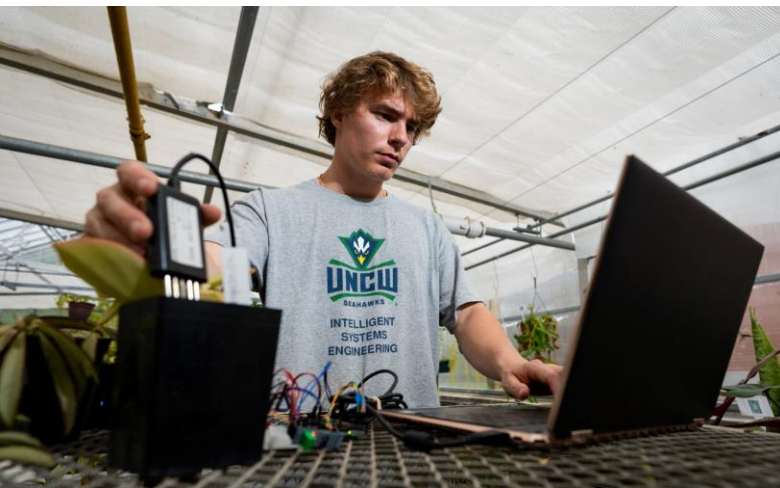
Responsible AI Use

- UNCW established guidelines that protect certain classifications of university data and encourage ethical and responsible use of AI tools.
- Information Technology Services published guidelines, promotes their use, and monitors the industry for trends.
- Provost Jamie Winebrake formed a faculty workgroup, Supporting Artificial Intelligence in Learning and Research (SAILR), to provide information, resources and research related to AI in academia.

The Intersection of AI, Higher Ed and Economy



Bridging the Skills Gap: Integrating AI into higher education programs and experiences equips students with essential knowledge, training and skills for the workforce, ensuring they are prepared for emerging job markets and preparing them to succeed in a competitive, global economy.



Driving Innovation and Economic Growth: AI technologies are transforming research and development, enhancing collaboration and knowledge transfer, accelerating discovery and productivity, and leading to growth opportunities in current and emerging fields.

Seahawks – Soaring into 2025 and Beyond

